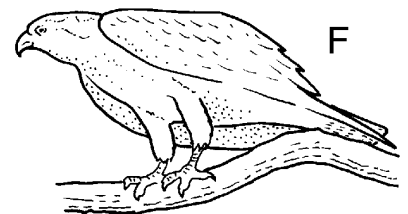
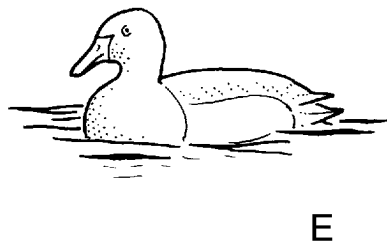
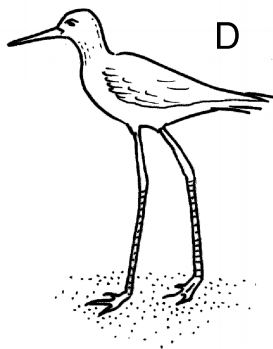
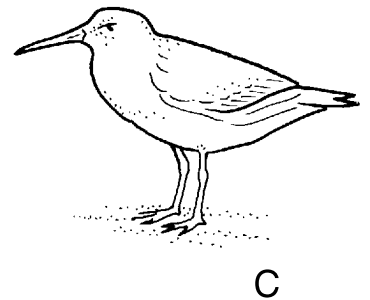
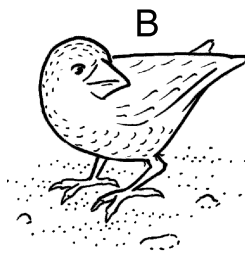
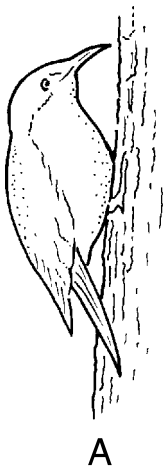


Different birds are adapted to feed in different habitats.
Look carefully at the pictures of the 6 birds below.

Can you match up each bird with the correct description?

- 1 Catches fish and tears them to pieces to feed its young.
- 2 Sieves its food out of pond water.
- 3 Climbs trees and picks insects out of cracks in the bark.
- 4 Cracks open hard seeds.
- 5 Wades in shallow water feeding on insects and small worms.
- 6 Wades in deep water feeding on insects on the surface.



continued ...

Fitting the bill (continued)

Look at the diagrams below.

Diagram 1 shows **three** burrowing animals that live at different depths in the sand on a beach. Wading birds feed on them.

Diagram 2 shows the heads of **three** wading birds.

Diagram 1

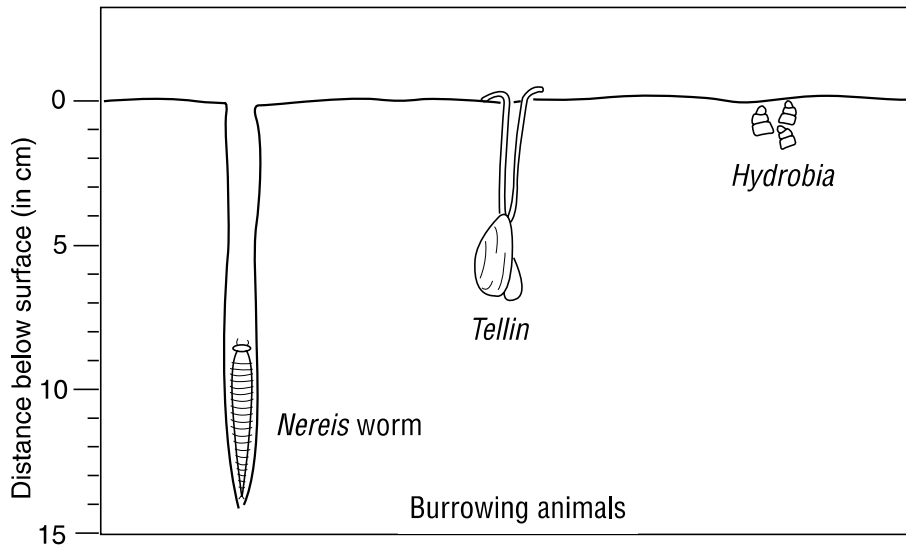
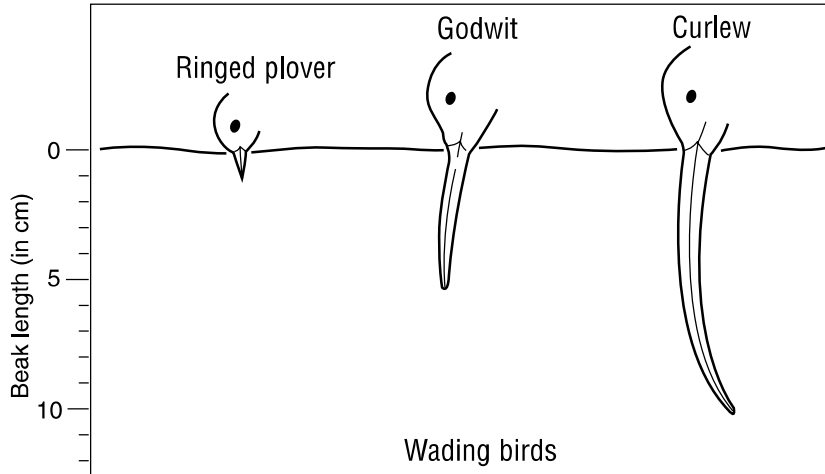


Diagram 2



7 Which burrowing animal is each wading bird likely to feed on? (i) Ringed plover
(ii) Godwit
(iii) Curlew

8 Which bird is able to feed on *all* the burrowing animals?

Mark scheme

You will receive 1 mark for correctly completing numbers 1, 2, 3, 4, 5, 6 and 8.

You will receive 3 marks for correctly completing number 7.

Maximum = 10 marks